



Easy Installation Instructions



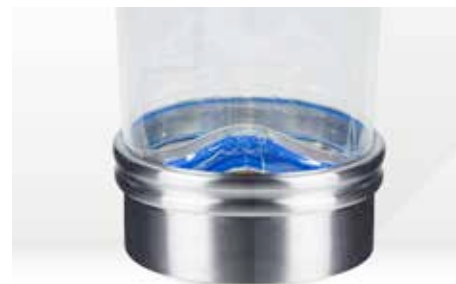
01.

Ensure the BFM® spigot is clean and dry.



02.

Seat the back of the connector into the BFM® spigot and release.



03.

Occasionally, the seal may not fully snap into the seated position first-time, as shown above. If so, please refer to step 4.



04.

Push the seal toward the center of the fitting at a different point on the circumference. On large diameters, this step may need to be repeated several times.



05.

The fitting should be sitting snugly and evenly. Now repeat the process with the other end of the connector.



06.

Snap into the second spigot, ensuring that the welded seam of the connector is straight and that points A and B are directly in line.

Your BFM® fitting is now ready to go.

BFM® Global makes no warranty of any kind, expressed or implied, except that goods sold shall be of merchantable quality, free of manufacturing defect, and the buyer assumes all risk and liability resulting from the use of the goods, whether used singly or in combination with other products.