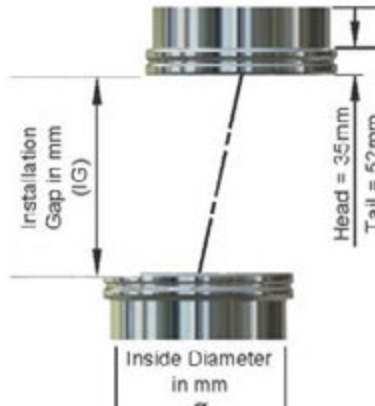


Offset Installations

Ideally, offset installations should be avoided wherever possible. Product flowing through the connector will be hitting and wearing one specific part of the connector during operation, generating heat and abrading the media. This is especially applicable for crystallised products like sugar.

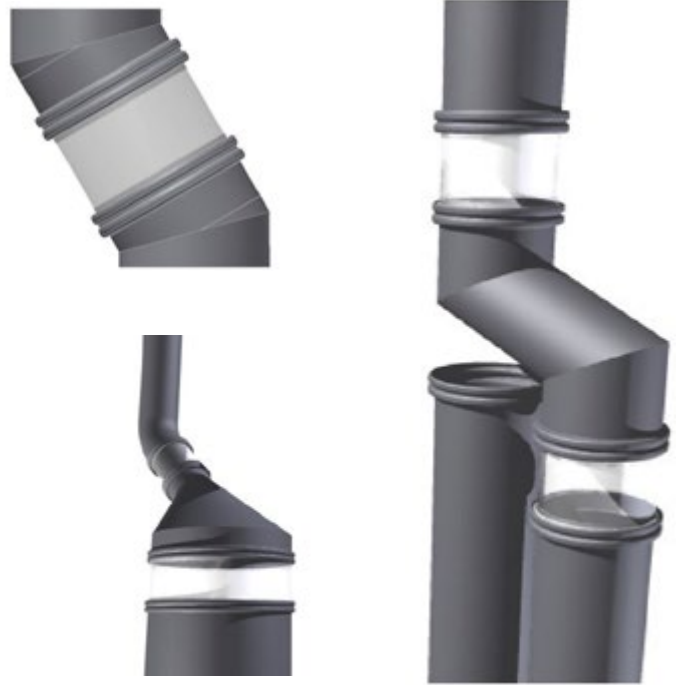
Our recommendation would be to manufacture the steel piping to account for the bends, or offset section of the pipe to allow the BFM® fitting to be installed in a straight section.

For installations where an offset cannot be avoided, or in the case of oscillating equipment, an Offset Calculator is available from BFM® to help calculate the correct installation gap required for specific connector lengths (CL) and offsets.



$$IG = CL - 20mm$$

(Minimum)



OFFSET GUIDELINES

- As a broad guide, the offset must be no more than 20% of the connector length, up to a maximum allowable offset of 80mm.
- The 'offset' is defined as the maximum spigot displacement/movement in one direction from vertical alignment.
- The largest connector diameter for offset applications is 500mm.



BFM® Global makes no warranty of any kind, expressed or implied, except that goods sold shall be of merchantable quality, free of manufacturing defect, and the buyer assumes all risk and liability resulting from the use of the goods, whether used singly or in combination with other products.