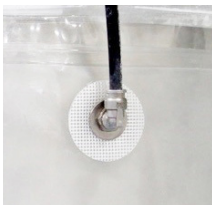
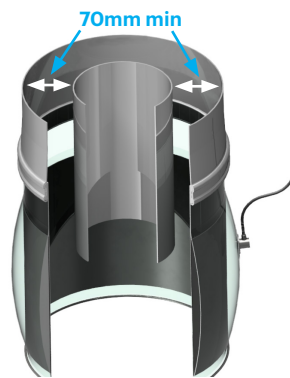


BFM® Bulk Bag Loader: Installation Guide

STEP 1: Adapt the end of the existing outer pipe by welding on a BFM® spigot of the appropriate diameter.

NB: If the central filling chute is going to extend downward (past the BFM® spigot towards the bottom of the Bulk Bag Loader), the diameter of the spigot & Bulk Bag Loader needs to be **at least 140mm larger** than the diameter of the central filling chute.

This is to allow enough room to be able to snap-fit the cuff of the Bulk Bag Loader into the spigot.



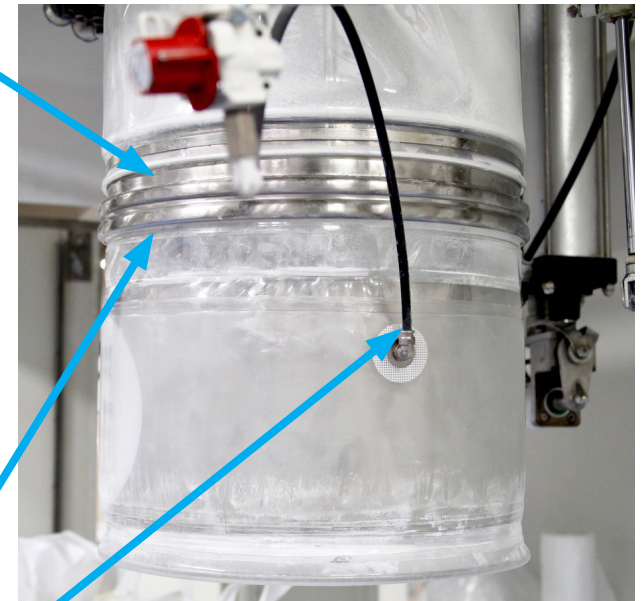
STEP 2: Snap-fit the top (cuff) of the BFM® Bulk Bag Loader into the spigot as you would a standard BFM® fitting connector.

(For more information on snap-fitting a BFM® fitting connector, refer to our [‘Easy Installation Instructions’](#) document).

STEP 3: Run an 8mm (OD) air-line tube and connect it to the pneumatic air inlet fitting.

Note: this should be set to a maximum of 6psi ((0.41 Bar).

STEP 4 Pull a bulk bag neck over the Bulk Bag Loader and open the air valve to inflate to find the appropriate expansion maximum for the bag neck diameter being used. Tug on the bag to ensure it is inflated enough to hold the bag neck securely then set the regulator.



NOTES:

- Air-venting/dust extraction still needs to be enabled inside the filling chute to enable airflow.
- **We recommend installing a pressure relief valve** in case of any sudden or accidental pressure surges.
- For ease of operation, a foot-controlled air inlet valve is also recommended but not essential.